

Supplementary Data

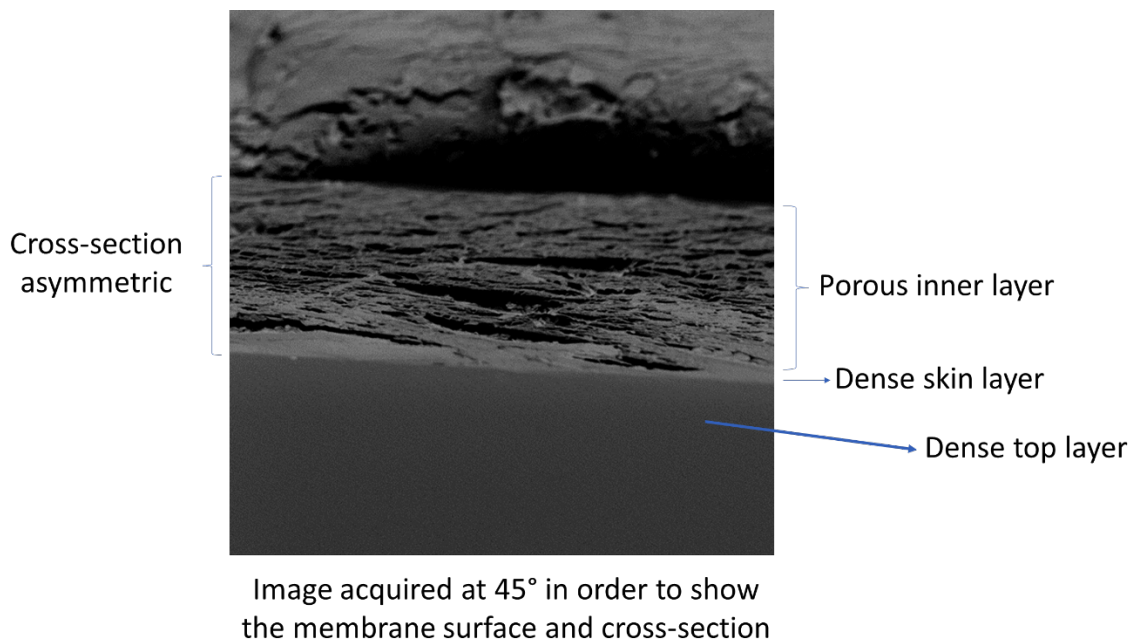


Figure S1: Illustrative scheme of the structure of the cross-section of the polymeric precursor of c-CMSM.

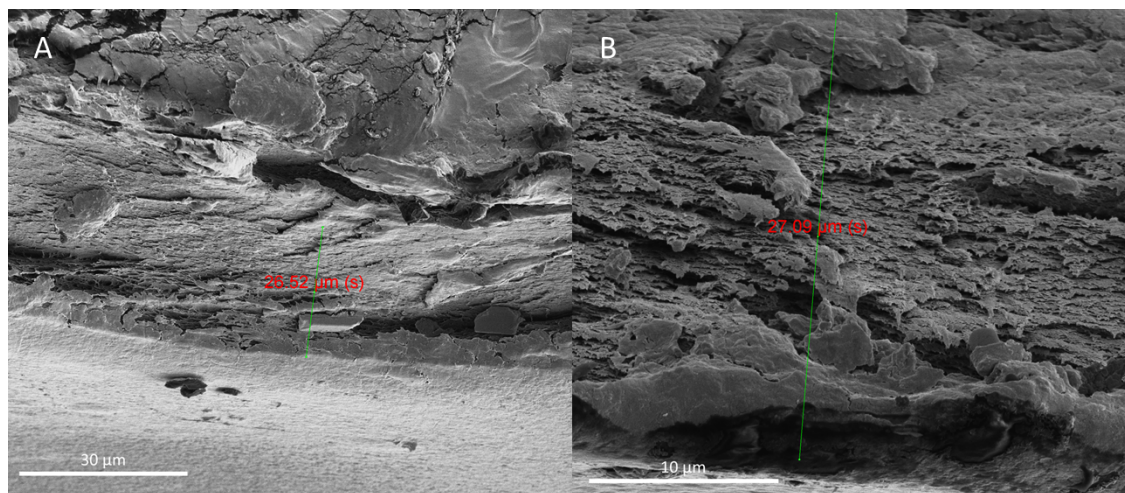


Figure S2: SEM images of the polymeric precursor prepared with 0.1 wt.% boehmite nanoparticles with different magnifications. In these two images, it is possible to observe an internal lamellar structure and on the surface of the precursor a denser structure.